



# INTEGRATED NEUROFEEDBACK SUITE

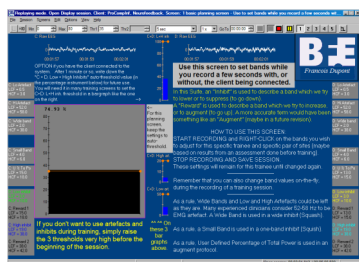
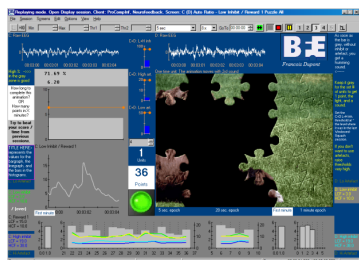
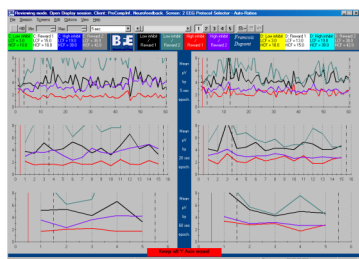
FRANÇOIS DUPONT, PH.D.



## Limited Edition Software Suite

The Integrated Neurofeedback suite was designed by François Dupont, Ph.D., as a tool for simplicity in neurofeedback training for beginner clinicians, as well as complex integration for experienced clinicians. Dr. Dupont has over 20 years experience in biofeedback and neurofeedback, dealing with a wide treatment population (chronic pain, ADHD, ASD, OCD, Tourette's, anxiety, traumatic brain injury, PTSD, etc). He has also worked under Paul Swingle's, Ph.D., supervision. Benefits of this suite include:

- **Simplicity:** a one "main bar graph" approach makes it easy for the therapist and the client to understand what's going on. The one main bar graph can represent the result of a computation or an algorithm that can be very simple, like one frequency band inhibit from one channel of EEG, or it can also be very complex, like combining 6 bands from 2 EEG channels.
- **Consistency:** Even though there are over 100 training screens in the suite, the majority of the screens use the same template consisting of one main bar graph and 2 or 3 smaller bar graphs as watchdogs for artefacts and muscle activity. Feedback consists of animations, DVDs and tones. On-screen notes are also included.
- **General:** the defined training bands are complementary to results obtained from a full QEEG, the TLC suite, any type of Mini Q assessments well as a symptom based assessment such as the Brownback-Mason CNC-1020 focus. (Note: Integrated Neurofeedback Suite does not contain these assessments)
- **Revision:** Protocol Selector screens plot the algorithm ("main bar graph" statistic) to verify trainee progress. They also compare to other algorithms to see if there is a better way of training.
- **Design:** possibility of integrating the "Integrated Neurofeedback Suite" review tools with other BFE and Thought Technology suites (with different channel sets).
- **Documentation:** technical manual and reference files provides by Dr. Dupont help guide the clinician to making best use of the suite.



## Education & Training Opportunities

The BFE offers two different types of online lessons/sessions designed to meet your diverse education and training needs:

- **6-Hour Integrated Neurofeedback Online Class:** this class is well suited for beginners or experienced practitioners that want to use Dr. Dupont's Integrated Neurofeedback suite and methods in their practice. All aspects of using the software will be covered in great detail, and recorded data will be reviewed to ensure proper recording. Interpretation of data by the instructor will occur, however focus is maintained on being able to successfully use all aspects of the software and equipment.
- **3-Hour Using Integrated Neurofeedback After Assessment Case Conferences:** attend live 60-minute online sessions scheduled to take the opportunity to ask Dr. Dupont's opinion on case examples from practice, while reviewed EEG Assessment and training plan strategies. The Grand Rounds is attended by professionals who are generally able to properly run the Integrated Neurofeedback suite software and use it with clients. We strongly encourage attendees to bring in their own case examples for review by Dr. Dupont.



**For more Information or Questions:** To purchase the suite and/or education & training, go to the BFE Shop:

[bluedupont@gmail.com](mailto:bluedupont@gmail.com)

[Www.bfe.org/buy](http://www.bfe.org/buy)



# INTEGRATED NEUROFEEDBACK SUITE

FRANÇOIS DUPONT, PH.D.



## BioGraph Infiniti Software

BioGraph Infiniti Software is the core of all current and future Thought Technology biofeedback and psychophysiology products. It provides a multimedia rich graphical experience, while capturing and analyzing raw data. It includes all the features and functions required to run our specialized Integrated Neurofeedback Suite and offers the ability to customize your own screens using the Developer Tool. The suite functions with **BioGraph Infiniti version 5.1.4 or 6.0**, and is designed to provide full compatibility with the latest Windows 8 operating system.



## Choose the Encoder to Meet Your Needs

You only need one of the encoders to run the software:

- **ProComp Infiniti encoder** is the eight-channel, multi-modality encoder that has all the power and flexibility you need for real-time, computerized biofeedback and data acquisition in any clinical setting. We only ever use two sensors with this suite.
- **ProComp 5 encoder** is similar to the ProComp Infiniti, but only records data from up-to five channels. We nonetheless only ever use two sensors with this suite. **Users simply purchase the ProComp Infiniti edition of the suite to use with the ProComp 5.**
- **ProComp2 encoder** is a compact, 2 channel version of the ProComp Infiniti encoder, which can be easily worn on a head band or a shirt collar. It can record data from up-to two sensors simultaneously.

## Select Sensor Measurements for Collecting Data

This list consists of the all sensors necessary for running the suite.

If using the ProComp Infiniti or ProComp 5 encoders:

- **(2) EEG-Z sensors** are pre-amplified electroencephalograph sensor with built in impedance checking, for measuring brainwaves.
- **(2) EEG monopolar/bipolar kit with DIN cable** is also necessary to use this sensor.
- **2-Channel electrode connectivity kit** for a monopolar, referential setup.

If using the ProComp 2 encoder:

- **(1) EEG-Z sensors** is pre-amplified electroencephalograph sensor with built in impedance checking, for measuring brainwaves. A second EEG-Z sensor is not required, since the ProComp2 encoder already has an EEG sensor built-in.
- **(2) EEG monopolar/bipolar kit with DIN cable** is also necessary to use this sensor.
- **2-Channel electrode connectivity kit** for a monopolar, referential setup.



## Additional Computer Setup Information

The software suite is designed for a single-monitor setup for training clients.